



5425 Nashville Road, Bowling Green, KY 42101  
p 270-746-9999 f 270-746-9170  
[www.tsperformance.com](http://www.tsperformance.com)

# WE ARE DIESEL



[WWW.TSPERFORMANCE.COM](http://WWW.TSPERFORMANCE.COM)





TABLE OF CONTENTS

	Page #
Contents .....	2
Installation.....	3
Operation.....	6
Updates.....	7
Troubleshooting.....	8



TS Performance looks forward to serving the technical needs you may run into, however, please review all instructions outlined here and go over all troubleshooting and updates before contacting TS Performance at 270-746-9999. The Iveco power module has been tested under the most harsh conditions utilizing state of the art technology to deliver maximum performance and reliability.

[www.tsperformance.com](http://www.tsperformance.com)

**READ CAREFULLY BEFORE INSTALLING ANY TS PERFORMANCE PRODUCT  
REMEMBER THIS IS A HIGH PERFORMANCE PRODUCT. USE AT YOUR OWN RISK.  
FOR OFF ROAD USE ONLY.**

**Do not use this product until you have carefully read the following agreement.** This agreement sets forth the terms and conditions for the use of the TS Performance product. The installation of this product indicates that the buyer has read and fully understands this agreement and accepts its terms and conditions.

**DISCLAIMER OF LIABILITY**

TS Performance, its distributors or dealers shall in no way be responsible for the product's proper use and service. The buyer of this system hereby waives all liability claims. The buyer acknowledges that he is not relying on the sellers skill or judgment to select or furnish goods suitable for any particular purpose and that there are no liabilities which extend beyond the description on the face hereof, and the buyer hereby waives all remedies or liabilities, expressed or implied arising by law or otherwise, (including without obligations of the seller with respect fitness, merchantability and consequential damages) or whether or not occasioned by the seller's negligence.

The seller disclaims any warranty and expressly disclaims any liability for personal injury or damages. The buyer acknowledges and agrees that the disclaimer of any liability for personal injury is a material term for this agreement and the buyer agrees to indemnify the seller and to hold the seller harmless from any claim related to the item of the equipment purchased. Under no circumstances will the seller be liable for any damages or expenses by reason of use or sales of any such equipment.

The seller assumes no liability regarding the improper installation or misapplication of its products. It is the installer's responsibility to check for proper installation and if in doubt the manufacturer is to be contacted.

**LIMITED LIFETIME WARRANTY**

**STATEMENT POLICY**

The warranty policy is the best warranty within the high performance diesel industry. All **TS Performance** products have been inspected, tested and trial in the factory laboratories and on the field.

Nothing in this Statement of Policy shall alter or enlarge the terms of warranties, obligation or liabilities of these products.

**TS Performance** is not responsible or liable for any products damaged or destroyed due to improper installation.

**TERMS OF WARRANTY**

The defective product must be freight prepaid and returned to **TS Performance** for further investigation, otherwise this warranty shall be deemed null and voided and of no effect.

This warranty is void on any products that show evidence of misapplication, negligence, and improper installation, and abuse, lack of proper maintenance or alternation from its original design.

In no event will **TS Performance** be liable for any consequential or incidental damages for breach of any express or implied warranty on the product.

This warranty is not transferable or assignable.

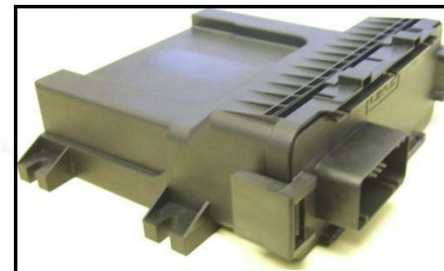
**TS Performance** is not responsible or liable for any products damaged or destroyed due to improper installation

**IN THE EVENT THAT THE BUYER DOES NOT AGREE WITH THIS AGREEMENT: THE BUYER MAY PROMPTLY RETURN THIS PRODUCT IN A NEW ANDN UNUSED CONDITION WITH A DATED PROOF OF PURCHASE TO THE PLACE OF PURCHASE WITHIN TEN (10) DAYS FROM DATE OF PURCHASE FOR A FULL REFUND.**

Wayville Road, Bowling  
P. 270-746-9999 1 27  
www.tsperforme

**Contents**

1. Be sure you have nice clean +12 Volt power to **Red** wire with eyelet on fuel module
2. The Black wires on the module should be routed to a good clean chassis ground.
3. Be sure that all the connectors on our harness are connected to the truck and nothing is left un-plugged. If so, this will cause an open loop and will activate the check engine light.



Module



Harness



zip ties, velcro

5425 Nashville Road, Bowling Green, KY  
p. 270-746-9999 f 270-746-9170  
[www.tsperformance.com](http://www.tsperformance.com)

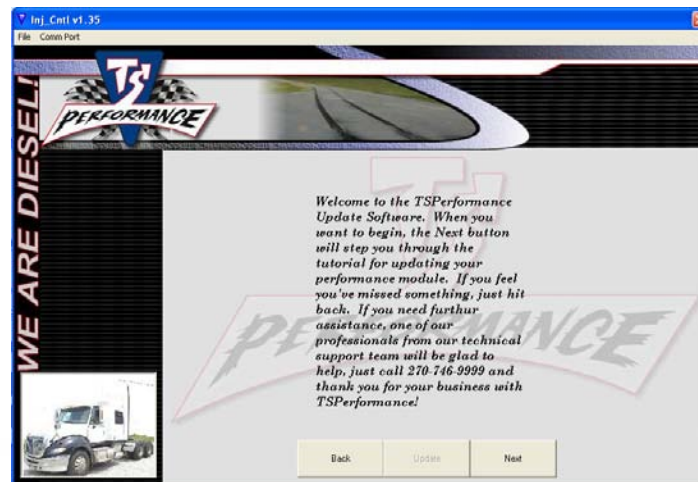
10.3L



12.9L



With changes being made every year to engine parameters and EPA restrictions, TS Performance has developed an online Updater so your fuel module will never be out dated. The Updater is located on our website. Utilizing the internet allows your module to be updated with no CD's or hardware to be mailed back and forth. TS Performance fuel modules are designed to change with an ever changing industry so your vehicle will timeout before your TS Performance purchase.



The ECM is located on the right side of the engine compartment. The MPHD will connect to the injector harness connector that plugs directly into the ECM and adds fuel economy and horsepower by optimizing the duration of fuel to each injector.

5425 Nashville Road, Bowling Green, KY 42101  
746-9999 | 270-746-9111  
www.tsperformance.com

**\*\*\*Need help or more info??? Call: 270 -746-9999\*\*\***



### Harness Connection

- Connect the factory harness that you disconnected from the computer and connect it to the MPHD harness. Make sure to line the tab on our connector up with the cut out on the factory connector.
- The connector should latch and be secure when properly installed.



10.3L

On the 10.3L Engine the MPHD will plug into the connector to the far right on the computer. Simply disconnect the factory harness and connect our harness as shown above..



12.9L

On the 12.9L engine our MPHD will connect to the top connector on the factory computer on the left side. Simply disconnect the factory harness and connect our

5425 Nashville Road, Bowling  
p. 270-746-9999 f. 270-746-9999  
www.tsperformance.com

### Mounting location

1. You can mount the MP-HD module anywhere away from extreme environments. There's plenty of room in the harness to mount away from heat. We recommend connecting it to a wire harness or other flat surface using the supplied zip ties and/or velcro. Just be sure the module is tightly secured to prevent damage.



### Power

1. Route the **RED** power wire from the module to a clean 12 Volts. On most applications the alternator is located close by.

### Ground

2. Route the **BLACK** ground wires from the module to clean chassis ground or directly to battery, usually the alternator on the passenger side of the vehicle is sufficient and easily accessed.

